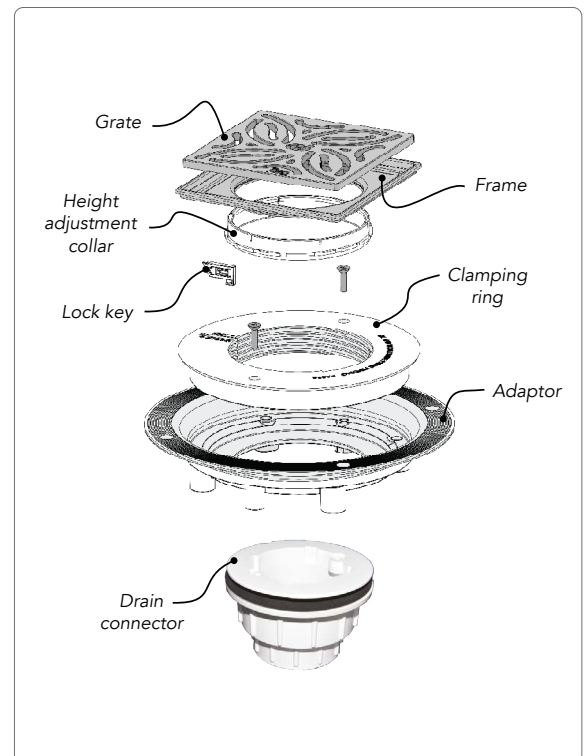


Product Overview

Designed to offer a contemporary finish for Tuff Form and Tuff Form8 Shower Bases finished with tile or natural stone, Tuff Form Drain for Tiled Showers include a decorative and highly durable stainless-steel grate which is available in multiple finishes and designs.

Features & Benefits

- + Designed for use with AKW Tuff Form and Tuff Form8 shower bases
- + Can accommodate 6-7 gallons per minute maximum flow rate (consult a plumber to provide an accurate calculation of drainage requirements)
- + Metal components made from SAE grade 304 stainless steel for durability and superior rust resistance
- + Pre-drilled pilot holes on perimeter for quick and easy installation
- + For a watertight connection, solvent weld drain connector (supplied) to 2" diameter drain line
- + All assemblies come with a decorative square grate which is available in a choice of 3 patterns and 4 colors/finishes
- + Matte black and oil-rubbed bronze grates benefit from a hard-wearing color coating for additional durability
- + Custom grate finishes are available by special order (4-week lead time)
- + Two height-adjustment collars included to match tile between 1/4"-1" thick
- + Weep holes in height-adjustment collars provide secondary drainage



Technical Specification

- + Materials: SAE grade 304 stainless steel (grate, frame), ABS plastic (adaptor, clamping ring, lock key, and height-adjustment collars), non-woven polyester (drain gasket), PVC (drain connector)
- + Grate design options: Swirl, Pinhole, Grid
- + Grate color/finish options: Brushed steel, polished steel, oil-rubbed bronze, matte black

Technical Specification (continued)

- + 6-7 gallons per minute maximum flow rate
- + Supplied with grate, frame, height-adjustment collars, lock key, clamping ring, adaptor, drain connector and drain gasket
- + Includes stainless-steel hardware for installation:
 - 2 x bolts to secure clamping ring: flat head, .70 pitch, 4mm x 15mm
 - 4 x screws to secure adaptor to base: flat head, #8 x 3/4"
- + Gasket dimensions: 13" x 13" with pre-punched 5 1/2" diameter hole
- + Gasket thickness: approx. .65mm
- + 4 x pre-drilled pilot holes on assembly perimeter
- + Adjust elevation of grate/frame to match tile between 1/4"-1" thick
- + Short height-adjustment collar accommodates tile between 1/4"-5/8" thick
- + Tall height-adjustment collar accommodates tile between 5/8"-1" thick
- + Drain connector clamps to bottom flange of adaptor
- + Solvent weld drain connector to 2" diameter drain line
- + Clamping ring engages drain gasket to complete mechanical waterproofing connection that covers drain assembly joints outside of drain channel
- + Embed drain gasket to drain adaptor and shower base for waterproof seal
- + Compatible with Tuff Form and Tuff Form8 shower bases
- + Suitable for use in showers finished with tile or stone

Compliance

a. ICC PMG-1222 lists compliance with:

- 1 2015, 2012 and 2009 International Residential Code® (IRC)
- 2 2015, 2012 and 2009 International Plumbing Code® (IPC)
- 3 2015, 2012 and 2009 Uniform Plumbing Code® (UPC)
- 4 2010 and 2005 National Plumbing Code of Canada (NPC)
- 5 ASME A112.18.2/CSA B125.2-2011, Plumbing Waste Fittings

Warranty & Approvals

- + AKW Limited lifetime warranty on Shower Base and Drain Assembly
- + 10-Year Sioux Chief warranty on Drain Connector



On Shower Base
and Drain Assembly

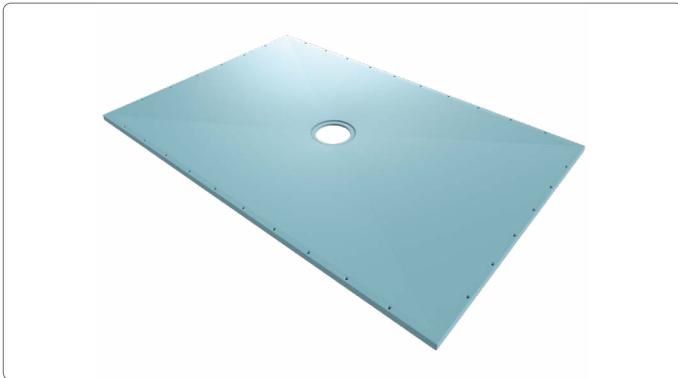


On Drain
Connector

Product Codes

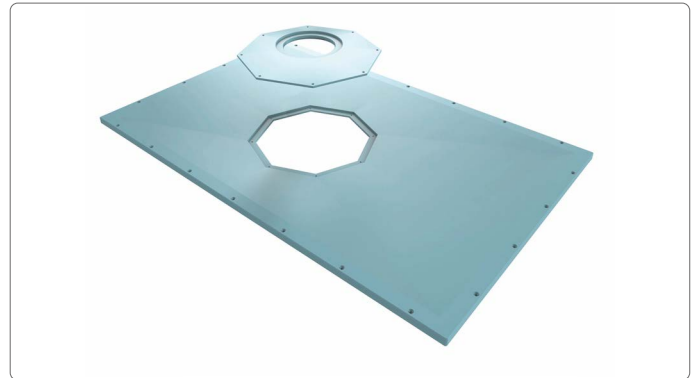
Tuff Form Drain w/ Swirl Grate – Brushed Stainless-Steel	CD1210-BS
Tuff Form Drain w/ Swirl Grate – Polished Stainless-Steel	CD1290-CH
Tuff Form Drain w/ Swirl Grate – Oil-Rubbed Bronze	CD1230-ORB
Tuff Form Drain w/ Swirl Grate – Matte Black	CD1213-BK
Tuff Form Drain w/ Pinhole Grate – Brushed Stainless-Steel	CD1250-BS
Tuff Form Drain w/ Pinhole Grate – Polished Stainless-Steel	CD1280-CH
Tuff Form Drain w/ Pinhole Grate – Oil-Rubbed Bronze	CD1240-ORB
Tuff Form Drain w/ Pinhole Grate – Matte Black	CD1233-BK
Tuff Form Drain w/ Grid Grate – Oil-Rubbed Bronze	CD1222-ORB
Tuff Form Drain w/ Grid Grate – Matte Black	CD1223-BK

Compatible Products



Tuff Form Shower Bases

Pre-sloped glass-fiber reinforced plastic (GRP) shower bases offering curbless, barrier-free entry to the shower – see specification for details.



Tuff Form8 Shower Bases

Curbless shower bases with an octagonal rotating drain plate that helps to avoid sub-floor obstructions during installation – see specification for details.