

Tuff Form Drain for Vinyl Showers

Product Overview

The Tuff Form Drain for Vinyl Showers is suitable for use with Tuff Form and Tuff Form8 Shower Bases in curbless, barrier-free showers finished with commercial-grade, weldable vinyl flooring.

Features & Benefits

- + Designed for use with AKW Tuff Form and Tuff Form8 shower bases
- + Can accommodate 6-7 gallons per minute maximum flow rate (consult a plumber to provide an accurate calculation of drainage requirements)
- + Made from ABS plastic with stainless-steel hardware for durability and long life
- + Pre-drilled pilot holes on adaptor perimeter for easy installation
- + For a watertight connection, solvent weld drain connector (supplied) to 2" diameter drain line
- + Assembly and circular grate available in white

Technical Specification

- + Materials: ABS plastic assembly, PVC drain connector, stainless-steel hardware
- + 6-7 gallons per minute maximum flow rate
- + Supplied with grate, clamping ring, adaptor, and drain connector
- + Includes stainless-steel hardware for installation:
 - 4 x bolts to secure clamping ring: flat head, 1.0 pitch, 6mm x 30mm
 - 2 x bolts to secure grate to adaptor: flat head, .70 pitch, 4mm x 30mm
 - 4 x screws to secure adaptor to base: flat head, #8 x 3/4"
- + 4 x pre-drilled pilot holes on adaptor perimeter
- + Solvent weld drain connector to 2" diameter drain line



- + Fit weldable vinyl over adaptor flange and securely grip with clamping ring
- + Drain connector clamps to bottom flange of adaptor
- + Compatible with Tuff Form and Tuff Form8 shower bases
- + Suitable for use in showers finished with commercial-grade weldable vinyl
- + Waterproofing not required with commercial-grade weldable vinyl

Tuff Form Drain for Vinyl Showers

Compliance

a. ICC PMG-1222 lists compliance with:

- 1 2015, 2012 and 2009 International Residential Code® (IRC)
- 2 2015, 2012 and 2009 International Plumbing Code® (IPC)
- 3 2015, 2012 and 2009 Uniform Plumbing Code® (UPC)
- 4 2010 and 2005 National Plumbing Code of Canada (NPC)
- 5 ASME A112.18.2/CSA B125.2-2011, Plumbing Waste Fittings

Warranty & Approvals

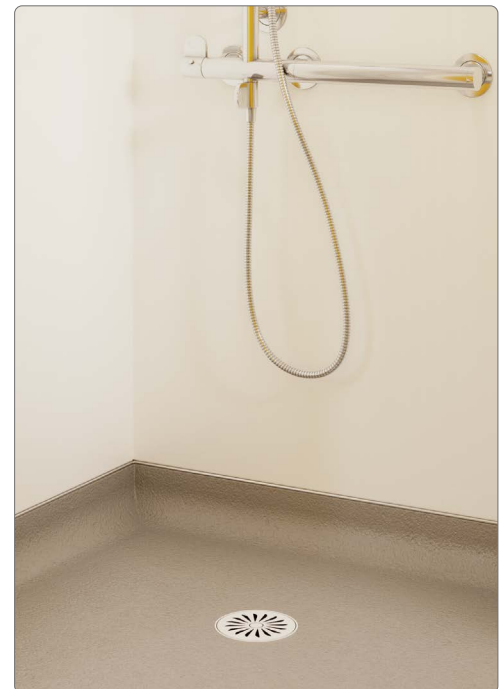
- + AKW Limited lifetime warranty on Shower Base and Drain Assembly
- + 10-Year Sioux Chief warranty on Drain Connector



On Drain
Assembly



On Drain
Connector

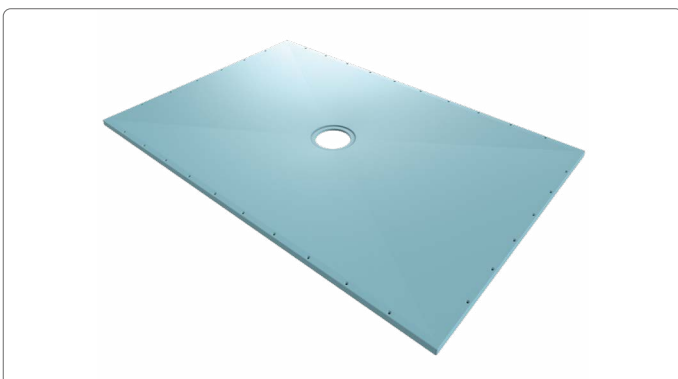


Product Codes

Tuff Form Drain for Commercial-Grade Weldable Vinyl

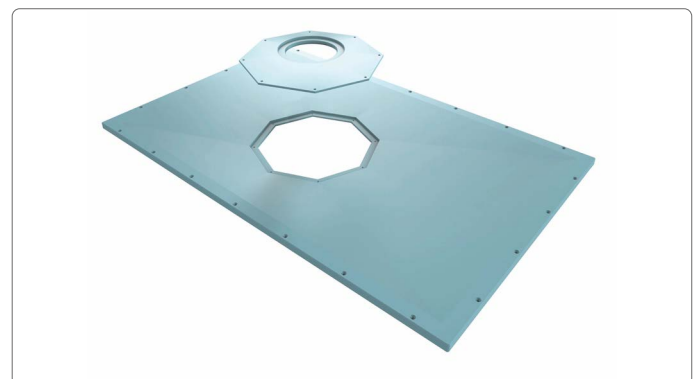
CD1250

Compatible Products



Tuff Form Shower Bases

Pre-sloped glass-fiber reinforced plastic (GRP) shower bases offering curbless, barrier-free entry to the shower – see specification for details.



Tuff Form8 Shower Bases

Curbless shower bases with an octagonal rotating drain plate that helps to avoid sub-floor obstructions during installation – see specification for details.